

easidetacher



The easidetacher was conceived from the confusion at the point of purchase caused when the sales associate cannot find the correct devise for releasing various tagging products used in the store. The compact design reduces the amount of counter space required while keeping all the detachers in one location for faster customer processing.

Providing for flexibility for each retail operation, the design of the easidetacher has provision for the following detaching units:

- Magnetic super lock clutches
- Alpha S3 key A
- AM Label Deactivation Pad
- Red Tag Detaching Array

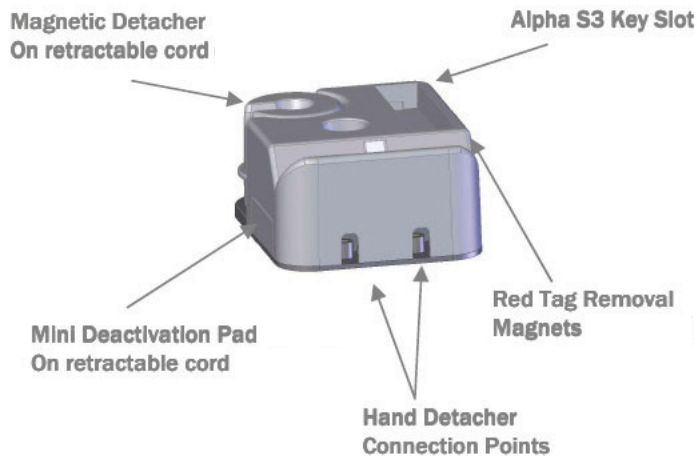


easidetacher open

easi-detacher



easidetacher closed



Product Codes

TAG-UD-001 Red tag, S3 and hard tag detacher

Product Specifications

Dimensions

Length

Min 150mm 5.90 in

Max 177mm 6.97 in

Width 121mm 4.76 in

Height 67mm 2.64 in